

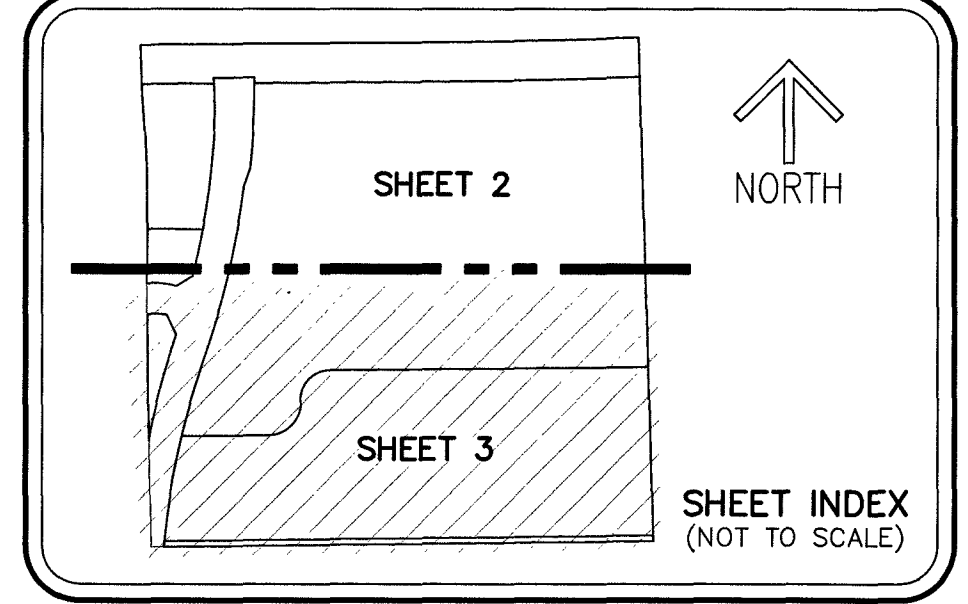
THIS INSTRUMENT PREPARED BY
DAVID P. LINDLEY
OF
CAULFIELD & WHEELER, INC.
SURVEYORS - ENGINEERS - PLANNERS
7900 GLADES ROAD, SUITE 100
BOCA RATON, FLORIDA 33434 - (561)392-1991
CERTIFICATE OF AUTHORIZATION NO. LB3591

RESERVE AT ATLANTIC MUPD

BEING A REPLAT OF PORTIONS OF TRACTS 5, 6, 7, 8 AND 25, AND ALL OF TRACTS 26, 27 AND 28, BLOCK 19, THE PALM BEACH FARMS CO. PLAT NO. 1,
ACCORDING TO THE PLAT THEREOF, AS RECORDED IN PLAT BOOK 2, PAGE 26 OF THE PUBLIC RECORDS OF PALM BEACH COUNTY, FLORIDA,
LYING IN SECTION 19, TOWNSHIP 46 SOUTH, RANGE 42 EAST, PALM BEACH COUNTY, FLORIDA.

NOTES
COORDINATES, BEARINGS AND DISTANCES
COORDINATES SHOWN ARE GRID
DATUM = NAD 83 1990 ADJUSTMENT
ZONE = FLORIDA EAST
LINEAR UNIT = U.S. SURVEY FOOT
COORDINATE SYSTEM 1983 STATE PLANE
TRANSVERSE MERCATOR PROJECTION
ALL DISTANCES ARE GROUND UNLESS OTHERWISE NOTED
SCALE FACTOR = 1.000020457
GROUND DISTANCE X SCALE FACTOR = GRID DISTANCE
BEARINGS SHOWN HEREON ARE GRID DATUM
NAD 83 1990 ADJUSTMENT, FLORIDA EAST ZONE.

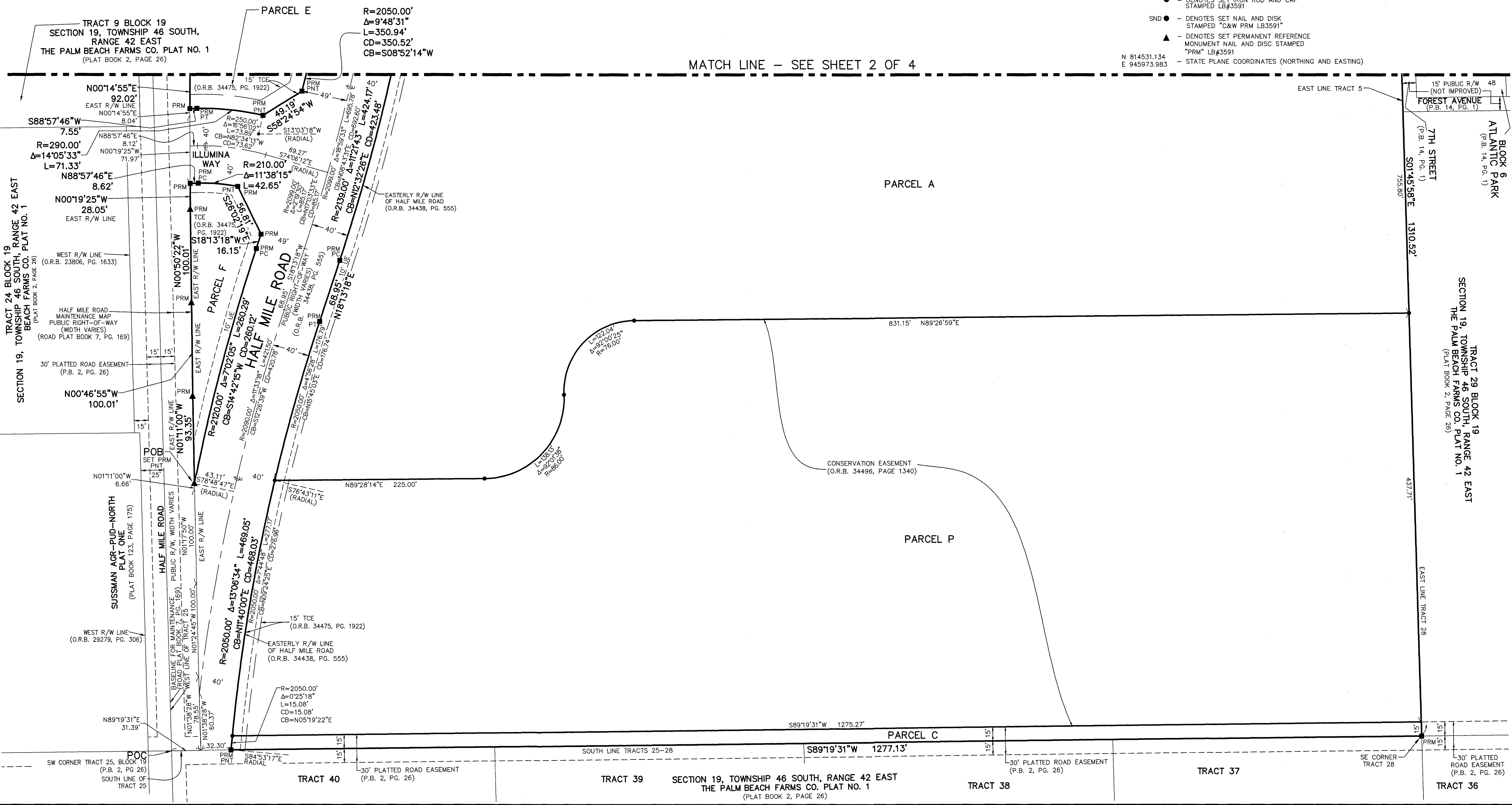
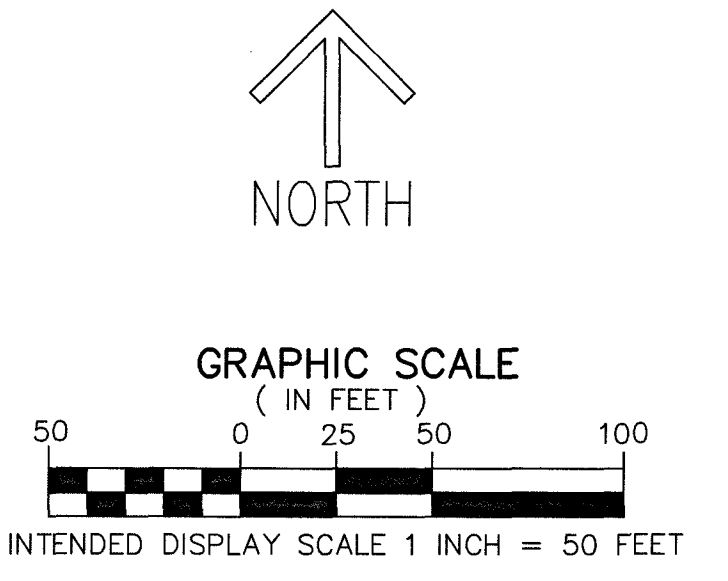
**FOR CONTROL TIES AND
COORDINATES SEE SHEET 4 OF 4**



LEGEND/ABBREVIATIONS

- CL - CENTERLINE
- Δ - DELTA (CENTRAL ANGLE)
- CB - CHORD BEARING
- CD - CHORD DISTANCE
- DE - DRAINAGE EASEMENT
- E - EASTING (WHEN USED WITH COORDINATES)
- F.D.O.T. - FLORIDA DEPARTMENT OF TRANSPORTATION
- L - ARC LENGTH
- LAE - LIMITED ACCESS EASEMENT
- LBE - LANDSCAPE BUFFER EASEMENT
- P.B. - PLAT BOOK
- PG. - PAGE
- LBE - LANDSCAPE BUFFER EASEMENT
- LME - LAKE MAINTENANCE EASEMENT
- L.W.D.D. - LAKE WORTH DRAINAGE DISTRICT
- MUPD - MULTIPLE USE PLANNED DEVELOPMENT
- N - NORTHING (WHEN USED WITH COORDINATES)
- O.R.B. - OFFICIAL RECORD BOOK
- PBCUE - PALM BEACH COUNTY UTILITY EASEMENT
- PC - POINT OF CURVATURE
- PI - POINT OF INTERSECTION
- POB - POINT OF BEGINNING
- POC - POINT OF COMMENCEMENT
- PT - POINT OF TANGENCY
- PNT - POINT OF NON-TANGENCY
- R - RADIUS
- R/W - RIGHT-OF-WAY
- TCE - TEMPORARY CONSTRUCTION EASEMENT
- UE - UTILITY EASEMENT
- PRM ■ - DENOTES SET PERMANENT REFERENCE MONUMENT
4" x 4" x 24" CONCRETE MONUMENT WITH
ALUMINUM DISK STAMPED "C&W PRM LB#3591"
UNLESS OTHERWISE NOTED
- - DENOTES SET IRON ROD AND CAP
STAMPED LB#3591
- SND ● - DENOTES SET NAIL AND DISK
STAMPED "C&W PRM LB3591"
- ▲ - DENOTES SET PERMANENT REFERENCE
MONUMENT NAIL AND DISC STAMPED
"PRM" LB#3591
- N 814531.134
E 945973.983 - STATE PLANE COORDINATES (NORTHING AND EASTING)

SHEET 3 OF 4



82